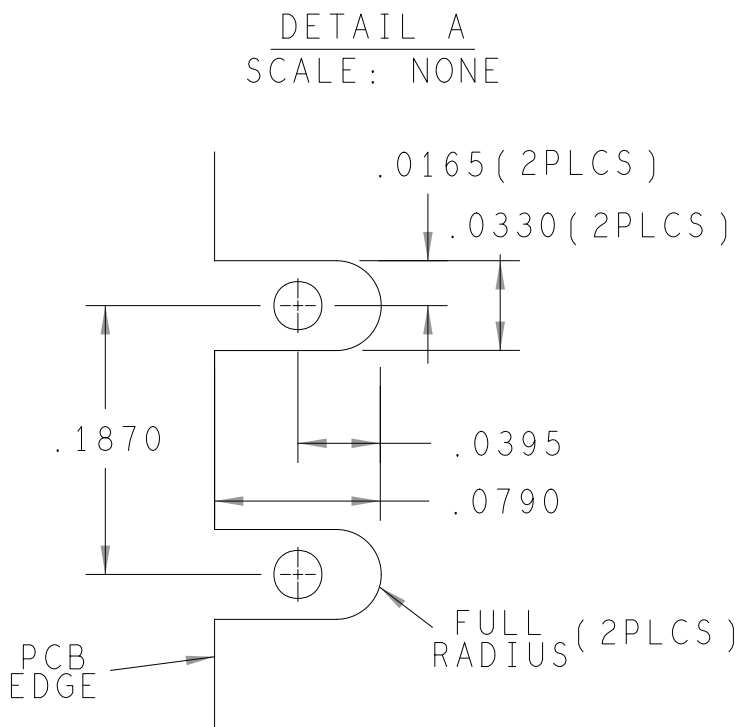
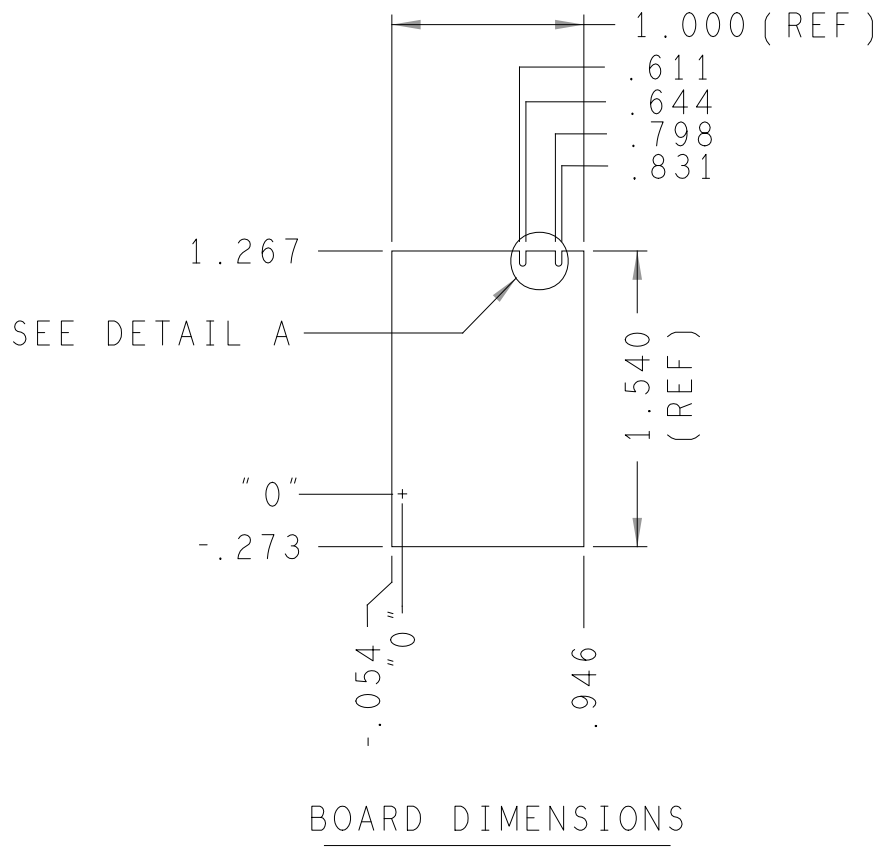


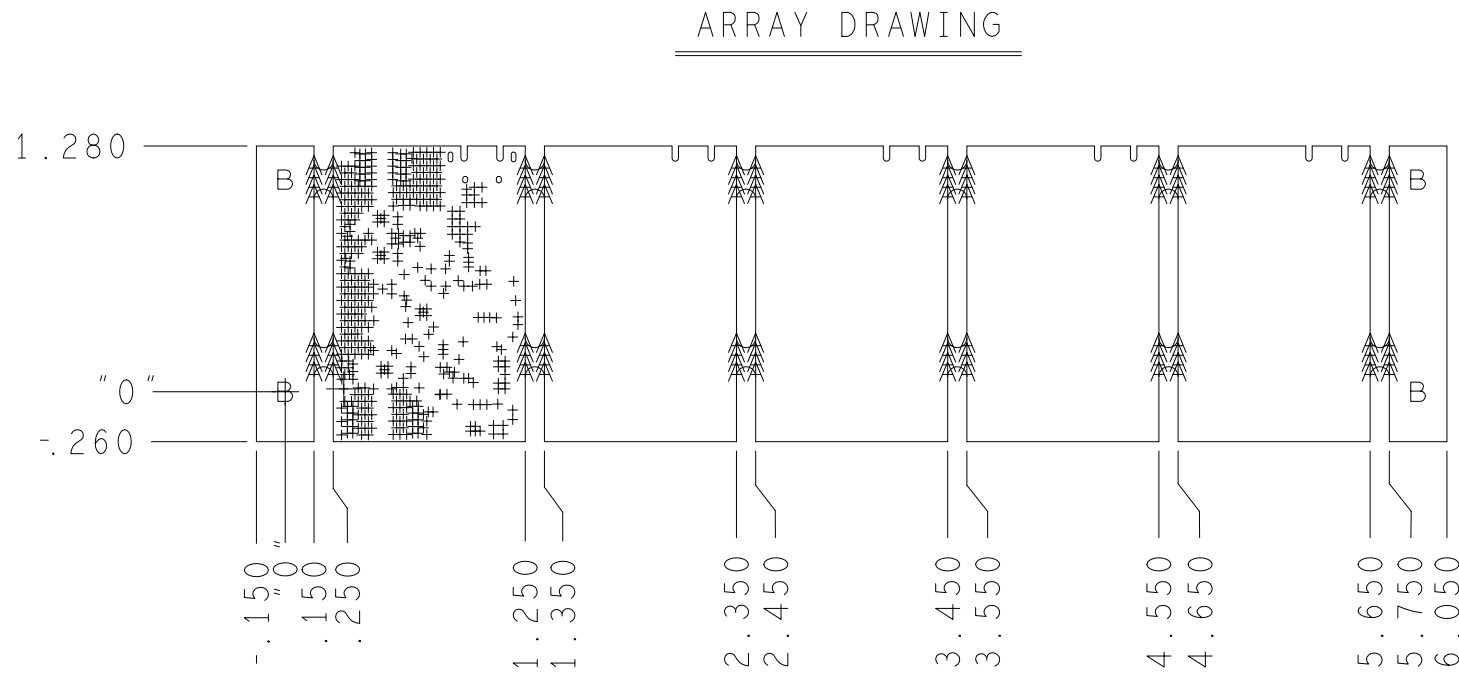
REVISIONS			
REV	DESCRIPTION	DATE	APPROVED
A	INITIAL RELEASE	03OCT19	E. REYTA
B	AS PER ECR-091486	05JUN20	E. REYTA
B1	AS PER ECR-099072	22OCT20	E. REYTA
C	AS PER ECR-101021	22JAN21	E. REYTA
C1	AS PER ECR-102036	22MAR21	E. REYTA
D	AS PER ECR-103809	03SEP21	E. REYTA




HOLE TOLERANCE

UNLESS SPECIFIED
PLATED: +/- 3 MILS
NON-PLATED: +/- 2 MILS

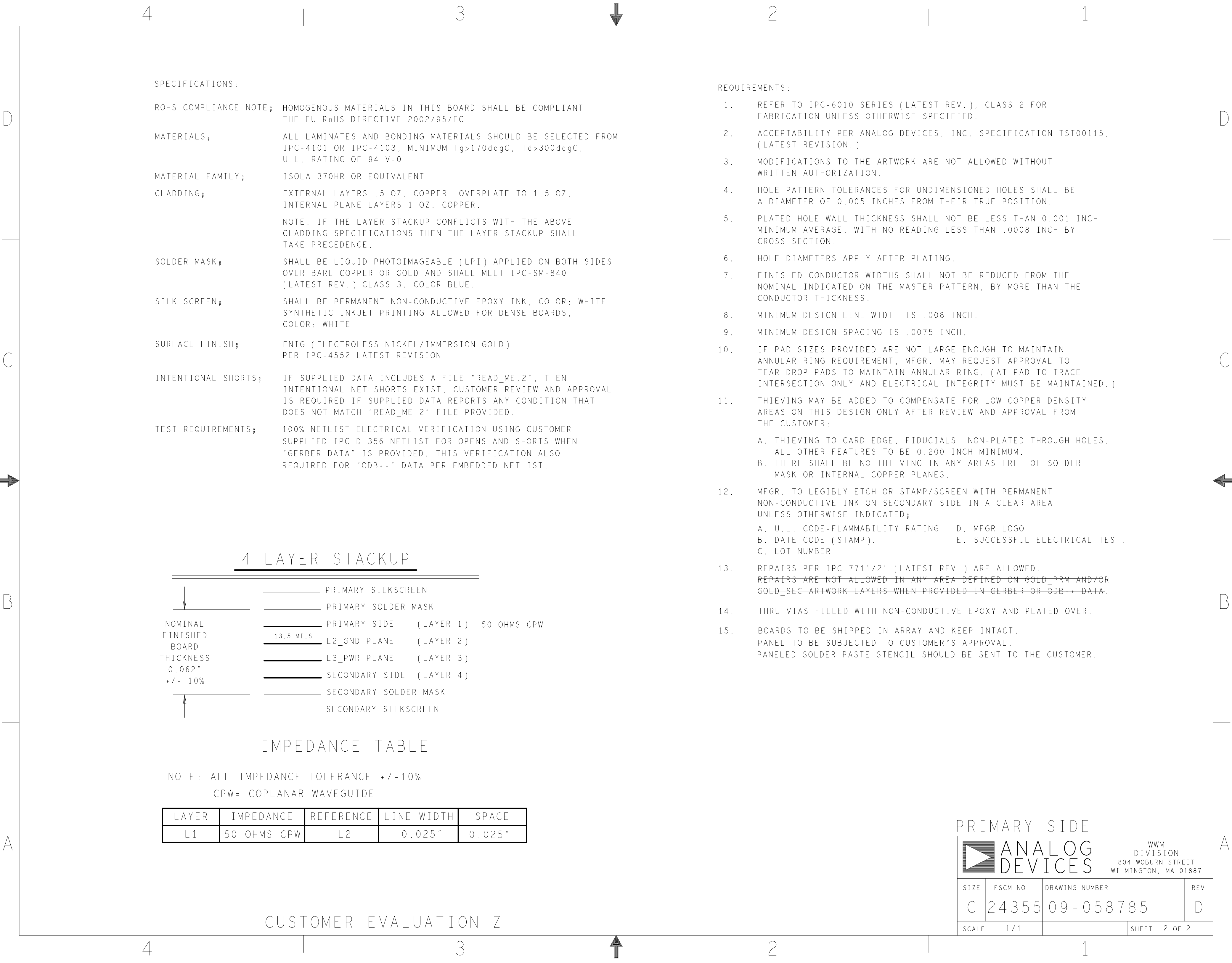
DRILL CHART: TOP to BOTTOM				
ALL UNITS ARE IN MILS				
FIGURE	SIZE	PLATED	QTY	TOLERANCE/NOTES
+	10.0	PLATED	440	DIA MAX/SEE NOTE 14
A	25.0	NON-PLATED	96	
B	125.0	NON-PLATED	4	
°	34.0x26.0	PLATED	2	
°	51.0x24.0	PLATED	2	



PRIMARY SIDE

UNLESS OTHERWISE SPECIFIED DIMENSIONS ARE IN INCHES			APPROVAL		DATE		<div><div></div><div>ANALOG DEVICES</div></div> <div>WWM DIVISION 804 WOBURN STREET WILMINGTON, MA 01887</div>		
TOLERANCES			TEMPLATE ENGINEER N/A						
DECIMALS	FRACTIONS	ANGLES	HARDWARE SERVICES M JOSE		03OCT19		TITLE FABRICATION EVAL - CN0534 - EBZ		
.XX --.010	--1/32	-- 2	HARDWARE SYSTEMS N/A						
.XXX --.005									
.XXXX --.0050									
MATERIAL			TEST ENGINEER N/A				FABRICATION EVAL - CN0534 - EBZ		
			COMPONENT ENGINEER A. CAUILAN-AGENA		03OCT19				
			TEST PROCESS N/A						
			HARDWARE RELEASE K. JABATAN		03OCT19				
			FINISH			DESIGNER M. NICOPOR		03OCT19	
			PTD ENGINEER E. REYTA		03OCT19		SIZE C		
			CHECKER N/A						
DO NOT SCALE DWG							DRAWING NUMBER 09 - 058785		
							SCALE 1/1		

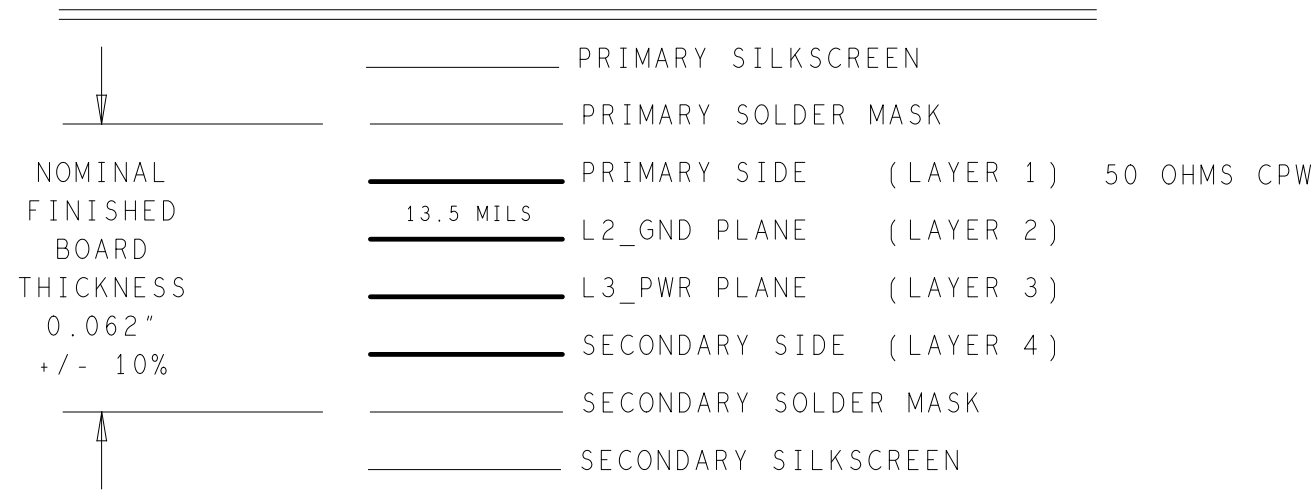
CUSTOMER EVALUATION Z



SPECIFICATIONS:

- ROHS COMPLIANCE NOTE; HOMOGENOUS MATERIALS IN THIS BOARD SHALL BE COMPLIANT THE EU RoHS DIRECTIVE 2002/95/EC
- MATERIALS; ALL LAMINATES AND BONDING MATERIALS SHOULD BE SELECTED FROM IPC-4101 OR IPC-4103, MINIMUM Tg>170degC, Td>300degC, U.L. RATING OF 94 V-0
- MATERIAL FAMILY; ISOLA 370HR OR EQUIVALENT
- CLADDING; EXTERNAL LAYERS .5 OZ. COPPER, OVERPLATE TO 1.5 OZ. INTERNAL PLANE LAYERS 1 OZ. COPPER.
- NOTE: IF THE LAYER STACKUP CONFLICTS WITH THE ABOVE CLADDING SPECIFICATIONS THEN THE LAYER STACKUP SHALL TAKE PRECEDENCE.
- SOLDER MASK; SHALL BE LIQUID PHOTOIMAGEABLE (LPI) APPLIED ON BOTH SIDES OVER BARE COPPER OR GOLD AND SHALL MEET IPC-SM-840 (LATEST REV.) CLASS 3. COLOR BLUE.
- SILK SCREEN; SHALL BE PERMANENT NON-CONDUCTIVE EPOXY INK, COLOR: WHITE SYNTHETIC INKJET PRINTING ALLOWED FOR DENSE BOARDS, COLOR: WHITE
- SURFACE FINISH; ENIG (ELECTROLESS NICKEL/IMMERSION GOLD) PER IPC-4552 LATEST REVISION
- INTENTIONAL SHORTS; IF SUPPLIED DATA INCLUDES A FILE "READ_ME.2", THEN INTENTIONAL NET SHORTS EXIST. CUSTOMER REVIEW AND APPROVAL IS REQUIRED IF SUPPLIED DATA REPORTS ANY CONDITION THAT DOES NOT MATCH "READ_ME.2" FILE PROVIDED.
- TEST REQUIREMENTS; 100% NETLIST ELECTRICAL VERIFICATION USING CUSTOMER SUPPLIED IPC-D-356 NETLIST FOR OPENS AND SHORTS WHEN "GERBER DATA" IS PROVIDED. THIS VERIFICATION ALSO REQUIRED FOR "ODB++" DATA PER EMBEDDED NETLIST.

4 LAYER STACKUP



IMPEDANCE TABLE

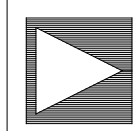
NOTE: ALL IMPEDANCE TOLERANCE +/-10%
CPW= COPLANAR WAVEGUIDE

LAYER	IMPEDANCE	REFERENCE	LINE WIDTH	SPACE
L1	50 OHMS CPW	L2	0.025"	0.025"

REQUIREMENTS:

- REFER TO IPC-6010 SERIES (LATEST REV.), CLASS 2 FOR FABRICATION UNLESS OTHERWISE SPECIFIED.
- ACCEPTABILITY PER ANALOG DEVICES, INC. SPECIFICATION TST00115, (LATEST REVISION.)
- MODIFICATIONS TO THE ARTWORK ARE NOT ALLOWED WITHOUT WRITTEN AUTHORIZATION.
- HOLE PATTERN TOLERANCES FOR UNDIMENSIONED HOLES SHALL BE A DIAMETER OF 0.005 INCHES FROM THEIR TRUE POSITION.
- PLATED HOLE WALL THICKNESS SHALL NOT BE LESS THAN 0.001 INCH MINIMUM AVERAGE, WITH NO READING LESS THAN .0008 INCH BY CROSS SECTION.
- HOLE DIAMETERS APPLY AFTER PLATING.
- FINISHED CONDUCTOR WIDTHS SHALL NOT BE REDUCED FROM THE NOMINAL INDICATED ON THE MASTER PATTERN, BY MORE THAN THE CONDUCTOR THICKNESS.
- MINIMUM DESIGN LINE WIDTH IS .008 INCH.
- MINIMUM DESIGN SPACING IS .0075 INCH.
- IF PAD SIZES PROVIDED ARE NOT LARGE ENOUGH TO MAINTAIN ANNULAR RING REQUIREMENT, MFGR. MAY REQUEST APPROVAL TO TEAR DROP PADS TO MAINTAIN ANNULAR RING. (AT PAD TO TRACE INTERSECTION ONLY AND ELECTRICAL INTEGRITY MUST BE MAINTAINED.)
- THIEVING MAY BE ADDED TO COMPENSATE FOR LOW COPPER DENSITY AREAS ON THIS DESIGN ONLY AFTER REVIEW AND APPROVAL FROM THE CUSTOMER:
 - THIEVING TO CARD EDGE, FIDUCIALS, NON-PLATED THROUGH HOLES, ALL OTHER FEATURES TO BE 0.200 INCH MINIMUM.
 - THERE SHALL BE NO THIEVING IN ANY AREAS FREE OF SOLDER MASK OR INTERNAL COPPER PLANES.
- MFGR. TO LEGIBLY ETCH OR STAMP/SCREEN WITH PERMANENT NON-CONDUCTIVE INK ON SECONDARY SIDE IN A CLEAR AREA UNLESS OTHERWISE INDICATED;
 - U.L. CODE-FLAMMABILITY RATING
 - DATE CODE (STAMP).
 - LOT NUMBER
 - MFGR LOGO
 - SUCCESSFUL ELECTRICAL TEST.
- REPAIRS PER IPC-7711/21 (LATEST REV.) ARE ALLOWED. ~~REPAIRS ARE NOT ALLOWED IN ANY AREA DEFINED ON GOLD_PRM AND/OR GOLD_SEC ARTWORK LAYERS WHEN PROVIDED IN GERBER OR ODB++ DATA.~~
- THRU VIAS FILLED WITH NON-CONDUCTIVE EPOXY AND PLATED OVER.
- BOARDS TO BE SHIPPED IN ARRAY AND KEEP INTACT. PANEL TO BE SUBJECTED TO CUSTOMER'S APPROVAL. PANELED SOLDER PASTE STENCIL SHOULD BE SENT TO THE CUSTOMER.

PRIMARY SIDE



**ANALOG
DEVICES**

WWM
DIVISION
804 WOBURN STREET
WILMINGTON, MA 01887

SIZE	FSCM NO	DRAWING NUMBER	REV
C	24355	09-058785	D
SCALE	1/1	SHEET 2 OF 2	

CUSTOMER EVALUATION Z